

PLATINUM

Trailers MFG.



226-301-4048

www.platinumtrailersmfg.com



Tri-Axle
Hopper Trailer

Why Platinum is your Next Trailer

1

Highest \$ Revenue Trailer

The lightest trailer based on **scaled weight** so you can haul more per load, to put more money into your pocket.

2

Most Serviceable Trailer

Designed with the maintenance technician and owner in mind.

3

Best Cleanout in the Industry

Platinum double angled slopes ensure the **fastest** and **best** cleanout in the industry.

4

Most Durable Trailer

High-strength galvanized steel frames; high-strength aluminum, UHMW wear parts, stainless steel components and fasteners used throughout to give the best strength-to-weight ratio.

5

Easiest Trailers to Keep Clean

Platinum trailer is the easiest to clean throughout due to its smooth unobstructed and easily accessible surfaces.

6

Most Configurable

Whatever the need, Platinum can find a solution.



STANDARD FEATURES

- WEIGHT:** 5,700 kg
LENGTH: 45-48ft
WIDTH: 102" Overall
HEIGHT: 142" Overall on a 49" coupler & 82" wall
SLOPES: 30" minimum angle on slopes
WATER LEVEL: 2047 cu.ft
HEAPED LEVEL: 2256 cu.ft
KING PIN: 18" Standard set back
LANDING GEAR: Jost AX series 2 speed landing gear
Galvanized steel frames
UHMW wear parts and bearings
Tridem axle spacing at 60" or 72"

FRONT/REAR WALLS

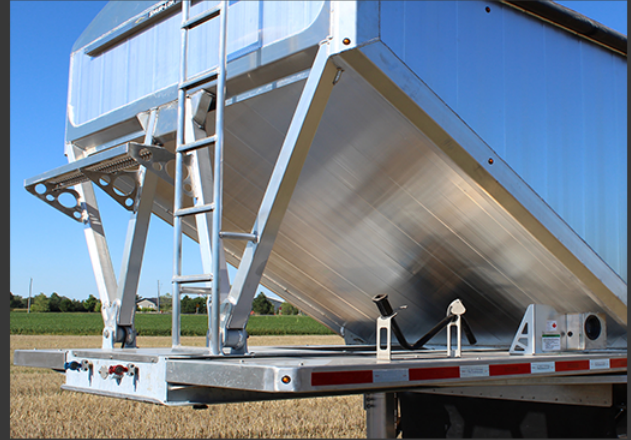
- All welded aluminum box body hollow core
- C/W ACCESS: Ladders and catwalk; radius corners

TARPS

- Manual roll tarp, black canvas, aluminum roof bows; and end caps

DOORS

- Standard opening driver side- 24" long x 24" wide; chute 22 3/8" clearance
- Stainless shafts, U joints, chain sprockets and door
- Door lock; simple automation chute lock design that allows for one hand operation
- Hammer hit brackets on hoppers (1 per chute opener)



AXLES/BREAKING/SUSPENSION

- 25000 lb air ride Dexter Smartaxle .41" wall, 5.5" diameter, 77.5" track width
- Haldex 30/30 longstroke chambers
- Sealco 6" slack
- Wabco ABS
- Sealco valves
- Oil bath hubs
- Centrifuge drums/longlife brake linings
- Short cams with cam enclosures

RIMS/TIRES

- 8.5R22.5 American Racing polished aluminum rims
- 11R22.5 Good year tires

FENDERS

- Aluminum fender on lead trailer, class 8 poly fender with stainless hardware and aluminum bracket

LIGHTING

- Seven wire connector at front; grote led lighting standard lifetime warranty lamps; fully sealed grote wiring harness
- Standard interior lighting

LIGHTING & VISIBILITY

- Reflective red/white Conspicuity tape
- Standard DOT light package

INTERIOR STEPS

- Steps throughtout hoppers for easy access



Standard Features

Interior steps



Simple hose routing



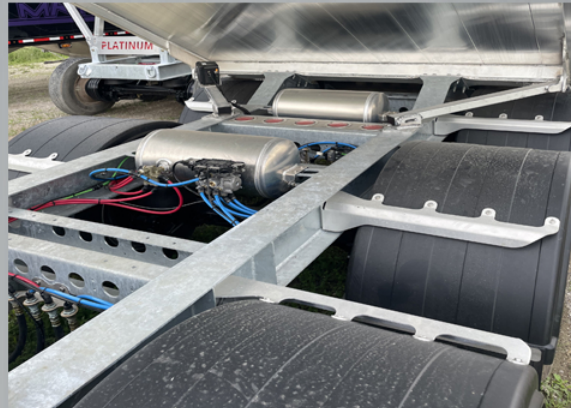
Innovative chute lock



Air ride control box



Aluminum air tanks

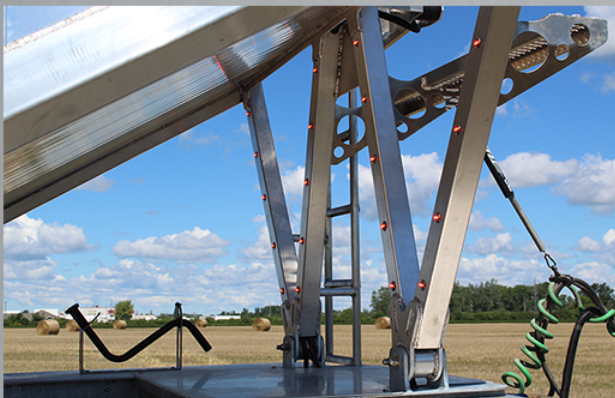


Self draining 5th wheel



Options

W lighting



Polished/painted trailer



More options

Electric chute openers



Two speed chute opener



Custom bumper



Custom height/length/slope angles



Electric Tarp opener



Light options

- extra sidelights- 28,46 or 72
- W lighting
- Underglow lights on hopper
- Many other options based on your liking



Chute options

- Dual chute locks
- Chutes facing towards or away
- Vibrators
- Oversized chutes up to 30" wide 40" long



Rims/Tires and axles

- Air inflation system
- Lift axles
- Super singles
- 11R24.5 rims and tires
- Disk brakes
- Grease hubs
- Alcoa Durabright rims

